



Board of Trustees

2009 Term

Harriett Cooper
Dick/Cynthia Luke
Crosby Houston

2010 Term

Darrel Clowes
Dianne Rencsok
Bob Youngs

2011 Term

Marcia Bailey
Rev. Christine Brownlie
Linnette Petersen

Officers

President: Marcia Bailey
Vice-President: Dick &
Cynthia Luke
Secretary: Harriett Cooper
Treasurer: Darrel Clowes

Isabel Berney, Exec. Dir.

Find out more

Protecting land	2
Resale of plots	3
Call for nominations	4
About survey	5
Directory	6
Survey	7

Cemetery survey distributed

The Funeral Consumers Alliance of the Virginia Blue Ridge conducts two biennial surveys, one for funeral homes and one for cemeteries. Work on the biennial cemetery survey is a huge task. Unlike funeral homes that have strict oversight by the Federal Trade Commission, the vast majority (90%) of cemeteries in Virginia are not regulated. There is no state oversight for private cemeteries, church cemeteries, or municipal cemeteries. We obtained a list from the State Cemetery Board of all licensed cemeteries in the state. These are open to the public. For these commercial cemeteries, the State Cemetery Board requires only a general price list, but unlike the Federal

Trade Commission which regulates funeral homes, the State Cemetery Board doesn't require any specific information on the price list. Last year the State Cemetery Board posted a sample price list on its website, but cemeteries are under no obligation to use this form or to include the suggested information. This makes collecting information difficult.

We sent letters to all in our service area requesting their general price list and included a stamped addressed envelope for them to send in the information. Some were very cooperative and responded.

Continued on page 2

Pet funeral home and crematory

The Roanoke Times recently reported that the Roanoke City Council approved a rezoning for Oakey's Funeral Home to have a pet funeral home and crematory, the only one in our region.

There are no plans for a pet cemetery. Oakey's will be

able to handle pets up to 200 pounds. Caskets, urns, plaques, and memorial keepsakes designed for animals will be on sale. The funeral home will be at 5416 Airport Road Northwest and is slated to open in June.

Cemetery Survey from 1



Many volunteers helped to collect data for the Cemetery Survey.

Others, we are sorry to report, needed reminding and personal visits from our volunteers. This year we had volunteers in Calloway, Moneta, Critz, Salem, Christiansburg, Floyd and Blacksburg help us with data collection.

Municipal cemeteries are not regulated by the state, but since they generally are open to the public we included them in our survey along with the commercial (licensed) cemeteries. We know about the municipal cemeteries in Blacksburg, Christiansburg, Dublin, Pulaski, Rocky Mount, and Salem. If you live in an area

with a municipal cemetery that is not on our list, please let us know. We will contact them for future surveys and we can always update our website at any time.

It is a big help to have volunteers willing to call on establishments and request a general price list. All it takes is a phone call or a short visit. If you are willing to help in this way for our future surveys, please let us know by calling our phone, sending email, or a short note. Many members consider our surveys to be our most important service.

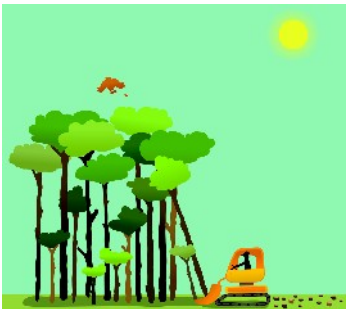
Memorial landscapes may be marketing

Places that are called Memorial Landscapes may not be eco-friendly. Beware of any "green" cemetery that acts as if it furthers a conservation purpose. Make certain the operators have a *conservation easement* held by a credible conservation entity that's been around for a few years, and not one created solely for this purpose. An easement ensures that what looks "green" today doesn't become a place that tomorrow accommodates large marble monuments and embalmed bodies. Another thing to inquire about is whether in addition to buying your burial plot, you can make a tax-

deductible donation to protect additional acres. If you can't, you may be dealing with a conventional cemetery company using the environment as a marketing ploy, rather than an organization using burial as a means of saving land.

The greenest of green cemeteries are conceived of as nature preserves, with unobtrusive markers made of natural stones or trees, or perhaps just a GPS coordinate. No embalming is allowed, and caskets are biodegradable, or not used at all.

You can count the number of nature-preserve cemeteries in the U.S. on the fingers of one hand. Unfortunately none are in Virginia.



Resale of cemetery plots difficult

It is often difficult to resell a cemetery plot if one decides it is no longer needed. Often families purchase several plots thinking they want enough space for family members to be buried next to each other. However, people divorce, move away, decide on cremation or body donation, die away from home or realize that the situation has changed. For instance, Sally may not want to be buried in Virginia now that she lives in California. Joe has decided he wants to be scattered at sea. What to do with cemetery plots that the family no longer needs?

It is important to know that most cemeteries sell only rights to interment; owners of plots do not actually own the plot – they own the right to be buried in that plot. Most cemeteries will not refund money from a previous purchase. You can't take it back to customer service and expect to get your money returned. Some cemeteries allow you to swap lots, paying for the difference at the now higher price. A few of the national chains make some provision to transfer to another cemetery within that chain, but there is usually a significant cost involved.

There are web sites dedicated to reselling plots and people can post their lots for sale for a fee. Consider other websites such as *Craigslist* that

offer free classified ads.

Cemetery plots may be listed there or in the local "shopper" newspaper. Check with the cemetery or read your contract to see if transfer to another owner is allowed and what the transfer fee is before you proceed.

In Virginia, a cemetery lot that is unused for 50 years may revert to the cemetery owner and be resold. One family was distressed to find that of the 12 lots that Grandpa purchased in 1939, the seven remaining ones had been reclaimed by the cemetery in a perfectly legal action. The third generation descendants were scattered across the country and had no use for the plots. One cousin was hoping to clear things up, sell the plots, and divide the proceeds. She was distressed to find that the family no longer owned the plots even though they had the papers showing the location of the 12 graves originally purchased and a receipt marked "paid in full."

If you have an unwanted plot, consider donating it to a church or social organization that can hold it in trust for a needy family.



Cemetery lots are often impossible to resell.

April brings National Health Care Decisions Day

Each year in April a day is set to encourage people to join Americans across the country in making future healthcare decisions known to family, friends and healthcare providers. Share your wishes and complete your advance directive, because...YOUR DECISIONS MATTER

**Funeral Consumers
Alliance of the
Virginia Blue Ridge**

PO Box 10082
Blacksburg VA 24062

PHONE:
540-953-5589

E-MAIL:
fcavbr@bev.net

www.funerals.org/affiliates/fcavbr

Affiliated with **Funeral
Consumers Alliance**

www.funerals.org

Nominations sought

The nominating committee is seeking candidates for a three year term on our Board of Directors. The Board meets monthly to carry on the business of our organization. It is an opportunity to meet and work with people interested in consumers' rights and educating the public. If you would like to serve or if you have a recommendation for the committee, please contact our office by phone or email.

The Board meetings are always open. The day-to-day work of the organization is carried on by the Board, but there is a place for anyone who wants to participate or contribute in some way. It can take as little time as a phone call or email, a half hour to call on a funeral home or cemetery, or sharing your talents.

Funeral Consumers Alliance of the Virginia Blue Ridge
Cemetery Survey – 2009 ©

How to read the cemetery survey

- ❖ Cemeteries licensed by the Virginia Cemetery Board and municipal cemeteries are surveyed. We have included a few cemeteries that act as municipal cemeteries even though they are run by an independent board of trustees. Church, private, and family cemeteries are not included because they are not open to the general public.
- ❖ Cemeteries in the table are grouped alphabetically by location. Check the directory on the reverse side which lists the cemeteries in alphabetical order by name and gives more detailed information.
- ❖ Prices may change, so be sure to check with the cemetery for complete and current information. Although price isn't the only consideration when purchasing a plot, it is a significant one for most consumers.
- ❖ Often there is a price range given, with higher prices for more desirable locations or for services after a designated hour. Burials usually cost more on weekends and holidays. Cemeteries that don't provide needed goods and services will work through a funeral home or with an independent supplier.
- ❖ **There are additional costs and considerations beyond those reflected on this survey. Be sure to ask about**
 - **perpetual care**
 - **whether financing is available**
 - **restrictions regarding monuments/memorials**
 - **requirements for an outer burial container**
 - **opening and closing the grave**

Since only 10% of Virginia cemeteries are regulated by the State Cemetery Board, it is difficult to get comprehensive, accurate information. The Funeral Consumers Alliance of the Virginia Blue Ridge has made a good faith attempt to report the price information as accurately as possible. Consumers are advised to check with the provider of their choice to confirm the accuracy of individual prices. We are constantly updating our records. Please send any information to

Funeral Consumers Alliance of the Virginia Blue Ridge
PO Box 10082
Blacksburg, VA 24062
Email it to fcavbr@bev.net

Public Cemeteries of the Virginia Blue Ridge

Cemetery	Street Address	City	Phone
Birchlawn Burial Park	177 Birchlawn Circle	Pearisburg	(540) 921-1600
Blue Ridge Memorial Gardens	5737 Airport Rd	Roanoke	(540) 366-6574
Cedar Lawn Memorial Park	5070 Cove Road	Roanoke	(540) 344-4263
Dublin Cemetery	Cemetery Ave	Dublin	(540) 674-4731
East Hill Cemetery	700 East Main Street	Salem	(540) 375-3016
Evergreen Burial Park	1037 Summit Ave. SW	Roanoke	(540) 342-2593
Fair View Cemetery	3300 Melrose Ave. NW	Roanoke	(540) 344-4263
Franklin Memorial Park	352 Franklin St.	Rocky Mount	(540) 483-7675
Highland Memory Gardens	5555 Lee Highway	Dublin	(540) 674-5231
Jacksonville Cemetery	Rt. 8	Floyd	(540) 745-2133
Memorial Gardens of The New Rive Valley	2551 N. Main St.	Blacksburg	(540) 552-7800
Mountain View Cemetery	711 Church Street	Ridgeway	(276) 956-2601
Mountain View Memorial Park	5970 Grassy Hill Rd	Boones Mill	(540) 334-5410
Oakwood/Pinehurst Cemetery	50 16th St.	Pulaski	(540) 994-8618
Old Dominion Memorial Gardens	7271 Cloverdale Road	Roanoke	(540) 992-5557
Patrick Memorial Gardens	20937 Jeb Stuart Hgwy	Stuart	(276) 694-3875
Rest Vale Cemetery	7529 Floyd Highway N.	Copper Hill	(540) 651-6126
Roselawn Memorial Gardens	2880 N. Franklin	Christiansburg	(540) 382-8756
Sherwood Memorial Park	1045 Lynchburg Tpk.	Salem	(540) 389-2171
Sunrise Memorial Park	Lee Highway	Fairlawn	(540) 674-5231
Sunset Cemetery	S. Franklin St.	Christiansburg	(540) 382-3408
Westview Cemetery	723 Roanoke St.	Blacksburg	(540) 392-7570
Williams Memorial Park	943 Westside Blvd NW	Roanoke	(540) 362-3059

**Survey of Licensed and Municipal Cemeteries
Funeral Consumers Alliance of the Virginia Blue Ridge**

Cemetery	Memorial Gardens of NRV	Westview	Mountain View Memorial Park
Location	Blacksburg	Blacksburg	Boones Mill
Price List Date	7/1/08	2009	2009
In Ground Burial Options	Range in dollars	Range in dollars	Range in dollars
Standard Space	1,200-1,500	500-1,000	700-1,550
Additional Interment Rights			
Cremation Section		100-200	
Cremation Inurnment Rights			
Infant Section	600	100	
Lawn Crypt			
Above Ground Options			
Community mausoleum, Single crypt			400-7,500
Community mausoleum, Tandem crypt			
Private Family Mausoleum	35,000+		
Niches	1,395-2,995		1,625-2,025
Outter Burial Containers			
Standard	800-3,300	Required	300-2,915
Cremation	225		
Cemetery Service Fees			
Ground Burial, Weekday	800	500.00	400-1,200
Ground Burial, Saturday	900	550.00	
Entombment in Mausoleum, Weekday			
Entombment in Mausoleum, Saturday			
Cremains, Ground Burial, Weekday	185-450	200	
Cremains, Ground Burial, Saturday	235-500	250	
Cremains, Niche Inurnment, Weekday			
Cremains, Niche Inurnment, Saturday			
Infant, in ground		100-125	
Child, in ground		500	
Disinterment		500	
Disinterment/Reinterment		500/500	600-1,600
Transfer of Ownership	75.00	25	
Document/Admin Fee	75.00		40.00
Memorials			
Individual	1,060-13,675		239-7,989
Companion			
Installation Fees	.55 per sq. in.	.25 per sq. in.	.85 per sq. in.
Additional Fees			
Outside Installer Fees			

**Survey of Licensed and Municipal Cemeteries
Funeral Consumers Alliance of the Virginia Blue Ridge**

Cemetery	Roselawn Memorial Gardens	Sunset	Rest Vale
Location	Christiansburg	Christiansburg	Copper Hill
Price List Date	7/15/08	no date	no date
In Ground Burial Options	Range in dollars	Range in dollars	Range in dollars
Standard Space	550-1,200	650-700	500
Additional Interment Rights			
Cremation Section			
Cremation Inurnment Rights			
Infant Section			
Lawn Crypt	5,468-6,408		
Above Ground Options			
Community mausoleum, Single crypt	4,105-12,005		
Community mausoleum, Tandem crypt			
Private Family Mausoleum			
Niches	2,180-5,890		
Outter Burial Containers			
Standard	525-18,375		Required
Cremation			
	2,715.00		
Cemetery Service Fees			
Ground Burial, Weekday	800 before 3PM	550	
Ground Burial, Saturday	900-1,300		
Entombment in Mausoleum, Weekday	500 before 3PM		
Entombment in Mausoleum, Saturday	600-900		
Cremains, Ground Burial, Weekday	350 before 3PM		
Cremains, Ground Burial, Saturday	450-525		
Cremains, Niche Inurnment, Weekday	150 before 3PM		
Cremains, Niche Inurnment, Saturday	250-325		
Infant, in ground			
Child, in ground			
Disinterment			
Disinterment/Reinterment			
Transfer of Ownership			
Document/Admin Fee			
Memorials			
Individual	1,190-5,402		
Companion			
Installation Fees			
Additional Fees			
Outside Installer Fees			

**Survey of Licensed and Municipal Cemeteries
Funeral Consumers Alliance of the Virginia Blue Ridge**

Cemetery	Dublin Cemetery	Highland Memory Gardens	Sunrise Burial Park
Location	Dublin	Dublin	Fairlawn
Price List Date	1990/91	1/5/09	1/5/09
In Ground Burial Options	Range in dollars	Range in dollars	Range in dollars
Standard Space	150-275	1,345-2,245	1,345-2,245
Additional Interment Rights		695-1,120	695-1,120
Cremation Section			
Cremation Inurnment Rights			
Infant Section		490	490
Lawn Crypt			
Above Ground Options			
Community mausoleum, Single crypt		5,795-10,895	5,795-10,895
Community mausoleum, Tandem crypt			
Private Family Mausoleum			
Niches		1,295-7,095	1,295-7,095
Outter Burial Containers			
Standard		1,315-17,590	1,315-17,590
Cremation		615	615
Cemetery Service Fees			
Ground Burial, Weekday		1,070 before 3PM	1,070 before 3PM
Ground Burial, Saturday		1,370-1,710	1,370-1,710
Entombment in Mausoleum, Weekday		780 before 3PM	780 before 3PM
Entombment in Mausoleum, Saturday		1,080-1,380	1,080-1,380
Cremains, Ground Burial, Weekday		680 before 3PM	680 before 3PM
Cremains, Ground Burial, Saturday		980-1,180	980-1,180
Cremains, Niche Inurnment, Weekday			
Cremains, Niche Inurnment, Saturday			
Infant, in ground			
Child, in ground			
Disinterment		1,605-2,115	1,605-2,115
Disinterment/Reinterment		2,140-2,820	2,140-2,820
Transfer of Ownership		95.00	95.00
Document/Admin Fee		135.00	135.00
Memorials			
Individual		740-35,980	740-35,980
Companion			
Installation Fees		.45 per sq. in.	.45 per sq. in.
Additional Fees			
Outside Installer Fees			

**Survey of Licensed and Municipal Cemeteries
Funeral Consumers Alliance of the Virginia Blue Ridge**

Cemetery	Jacksonville	Birchlawn Burial Park	Oakwood/ Pinehurst
Location	Floyd	Pearisburg	Pulaski
Price List Date	2/26/09	1/1/09	3/5/09
In Ground Burial Options	Range in dollars	Range in dollars	Range in dollars
Standard Space	450.00	525-1,250	275-350
Additional Interment Rights			
Cremation Section			
Cremation Inurnment Rights			
Infant Section			
Lawn Crypt			
Above Ground Options			
Community mausoleum, Single crypt		3,200-6,720	
Community mausoleum, Tandem crypt			
Private Family Mausoleum			
Niches		1,160-7,000	
Outer Burial Containers			
Standard	required	694-2,595	required
Cremation			
Cemetery Service Fees			
Ground Burial, Weekday		865-1,265	
Ground Burial, Saturday			
Entombment in Mausoleum, Weekday		430-550	
Entombment in Mausoleum, Saturday			
Cremains, Ground Burial, Weekday		270-330	
Cremains, Ground Burial, Saturday			
Cremains, Niche Inurnment, Weekday		230-290	
Cremains, Niche Inurnment, Saturday			
Infant, in ground			
Child, in ground			
Disinterment			
Disinterment/Reinterment			
Transfer of Ownership			
Document/Admin Fee			
Memorials			
Individual		1,150-10,000	
Companion			
Installation Fees			
Additional Fees			
Outside Installer Fees			

**Survey of Licensed and Municipal Cemeteries
Funeral Consumers Alliance of the Virginia Blue Ridge**

Cemetery	Mountain View	Blue Ridge Memorial Gardens
Location	Ridgeway	Roanoke
Price List Date	2/12/09	11/6/08
In Ground Burial Options	Range in dollars	Range in dollars
Standard Space	892-1,092	1,345-2,245
Additional Interment Rights	485	695-1,120
Cremation Section	892-1,092	945.00
Cremation Inurnment Rights	218-570	
Infant Section	free	490.00
Lawn Crypt		2,785-4,265
Above Ground Options		
Community mausoleum, Single crypt	4,917-6,092	5,995-12,895
Community mausoleum, Tandem crypt	6,830-9,576	
Private Family Mausoleum	38,128-2,175,000	
Niches	869-9,256	1,195-7,895
Outter Burial Containers		
Standard	1,034-1,134	1,315-17,590
Cremation	360-481	615.00
Cemetery Service Fees		
Ground Burial, Weekday	1,080.00	1,070 before 3PM
Ground Burial, Saturday	1,280.00	1,370.00
Entombment in Mausoleum, Weekday	845.00	780 before 3PM
Entombment in Mausoleum, Saturday	1,045.00	1,080.00
Cremaains, Ground Burial, Weekday	570.00	680 before 3PM
Cremaains, Ground Burial, Saturday	770.00	980-1,180
Cremaains, Niche Inurnment, Weekday	122-570	
Cremaains, Niche Inurnment, Saturday	322-770	
Infant, in ground	free	
Child, in ground	435-635	
Disinterment	1,620-1,820	1,605-2,115
Disinterment/Reinterment	2,700-2,900	2,140-2,820
Transfer of Ownership	free	95.00
Document/Admin Fee	75-145	135.00
Memorials		
Individual	1,922-2,022	740-35,980
Companion	2,198-7,198	
Installation Fees	309-833	.45 per sq. in.
Additional Fees		
Outside Installer Fees	476-843	

**Survey of Licensed and Municipal Cemeteries
Funeral Consumers Alliance of the Virginia Blue Ridge**

Cemetery	Cedar Lawn	Evergreen Burial Park	Fair View
Location	Roanoke	Roanoke	Roanoke
Price List Date	12/1/08	2008	12/1/08
In Ground Burial Options	Range in dollars	Range in dollars	Range in dollars
Standard Space	1,100-1,350	550-1,750	1,100-1,350
Additional Interment Rights	525.00		525.00
Cremation Section	3,295.00		3,295.00
Cremation Inurnment Rights			
Infant Section			
Lawn Crypt			
Above Ground Options			
Community mausoleum, Single crypt		2,300-19,900	
Community mausoleum, Tandem crypt			
Private Family Mausoleum			
Niches	2,395-5,995	1,250-10,000	2,395-5,995
Outter Burial Containers			
Standard	995-2,095	300-2,715	995-2,095
Cremation	185-450		185-450
Cemetery Service Fees			
Ground Burial, Weekday	1,095 before 4PM	1,100.00	1,095 before 4PM
Ground Burial, Saturday	1,095 before 1PM		1,095 before 1PM
Entombment in Mausoleum, Weekday		1,100-1,200	
Entombment in Mausoleum, Saturday			
Cremains, Ground Burial, Weekday	500 before 4PM		500 before 4PM
Cremains, Ground Burial, Saturday	500 before 1PM		500 before 1PM
Cremains, Niche Inurnment, Weekday			
Cremains, Niche Inurnment, Saturday			
Infant, in ground			
Child, in ground			
Disinterment	1,295.00		1,295.00
Disinterment/Reinterment		600-1,600	
Transfer of Ownership	100.00		100.00
Document/Admin Fee	75.00	40.00	75.00
Memorials			
Individual	935-6,500	850-7,189	935-6,500
Companion			
Installation Fees	.90-1.00 per sq. in.	.85 per sq. in.	.90 per sq. in.
Additional Fees			
Outside Installer Fees	25.00		25.00

**Survey of Licensed and Municipal Cemeteries
Funeral Consumers Alliance of the Virginia Blue Ridge**

Cemetery	Old Dominion Gardens	Williams Memorial Pk.	Franklin Memorial Park
Location	Roanoke	Roanoke	Rocky Mount
Price List Date	3/16/09	no date	2/3/09
In Ground Burial Options	Range in dollars	Range in dollars	Range in dollars
Standard Space	1,147-1,292	850	595-1,000
Additional Interment Rights	509.25		
Cremation Section	228.90	350	
Cremation Inurnment Rights	128.10		
Infant Section			
Lawn Crypt	5,163-10,320		
Above Ground Options			
Community mausoleum, Single crypt	5,342-8,602		sold out
Community mausoleum, Tandem crypt	9,256-10,975		sold out
Private Family Mausoleum			sold out
Niches	912-9,719		sold out
Outter Burial Containers			
Standard	1,086-3,695	495-695	799-6,000
Cremation	378-505		
Cemetery Service Fees			
Ground Burial, Weekday	1,134 before 3:45	850	900 before 3PM
Ground Burial, Saturday	1,344	950	1,000 before 3PM
Entombment in Mausoleum, Weekday	887 before 3:45		900 before 3PM
Entombment in Mausoleum, Saturday	1,097		1,000 before 3PM
Cremains, Ground Burial, Weekday	598 before 3:45	250	600 before 3PM
Cremains, Ground Burial, Saturday	809	350	700 before 3PM
Cremains, Niche Inurnment, Weekday	128		
Cremains, Niche Inurnment, Saturday			
Infant, in ground	457		
Child, in ground			
Disinterment	1,701		1,000.00
Disinterment/Reinterment	3,402		2,000.00
Transfer of Ownership			25.00
Document/Admin Fee			
Memorials			
Individual	1,247-6,357	1,014-1,607	1,540.00
Companion		1,595-2,885	2,200.00
Installation Fees	634-875		.80 per sq. in.
Additional Fees			
Outside Installer Fees			

**Survey of Licensed and Municipal Cemeteries
Funeral Consumers Alliance of the Virginia Blue Ridge**

Cemetery	East Hill Cemetery	Sherwood Memorial Park	Patrick Memorial Gardens
Location	Salem	Salem	Stuart
Price List Date	1/20/09	12/5/08	1/1/09
In Ground Burial Options	Range in dollars	Range in dollars	Range in dollars
Standard Space	800		1,295
Additional Interment Rights		1,095-1,800	
Cremation Section			scatter - 399
Cremation Inurnment Rights		595-795	
Infant Section			
Lawn Crypt		5,495	
Above Ground Options			
Community mausoleum, Single crypt		5,975-7,450	5,099-7,099
Community mausoleum, Tandem crypt		8,550-38,995	9,099-13,099
Private Family Mausoleum			
Niches		2,250-3,795	
Outter Burial Containers			
Standard	required	995-3,095	1,080-3,489
Cremation		150-765	
Cemetery Service Fees			
Ground Burial, Weekday	800	1,195.00	845
Ground Burial, Saturday	800	1,395 before 1PM	945/1,045 Sun
Entombment in Mausoleum, Weekday		1,195.00	550
Entombment in Mausoleum, Saturday		1,395 before 1PM	600/650 Sun
Cremains, Ground Burial, Weekday	450	650.00	350
Cremains, Ground Burial, Saturday	450	750 before 1PM	400/450 Sun
Cremains, Niche Inurnment, Weekday		600.00	175
Cremains, Niche Inurnment, Saturday		700.00	199/249 Sun
Infant, in ground	no fee	650-850	
Child, in ground		850-1,050	
Disinterment		1,600	
Disinterment/Reinterment		2,100	
Transfer of Ownership		100	
Document/Admin Fee			
Memorials			
Individual		841-9,069	449-5,311
Companion		540-1,050	
Installation Fees		540-1,050	.75 per sq. in.
Additional Fees		100	
Outside Installer Fees			

**Survey of Licensed and Municipal Cemeteries
Funeral Consumers Alliance of the Virginia Blue Ridge**

Cemetery	Mountain View
Location	Vinton
Price List Date	6/1/08
In Ground Burial Options	Range in dollars
Standard Space	900
Additional Interment Rights	
Cremation Section	
Cremation Inurnment Rights	
Infant Section	450
Lawn Crypt	
Above Ground Options	
Community mausoleum, Single crypt	
Community mausoleum, Tandem crypt	
Private Family Mausoleum	
Niches	950
Outter Burial Containers	
Standard	
Cremation	
Cemetery Service Fees	
Ground Burial, Weekday	900
Ground Burial, Saturday	1,000 AM
Entombment in Mausoleum, Weekday	
Entombment in Mausoleum, Saturday	
Cremains, Ground Burial, Weekday	450
Cremains, Ground Burial, Saturday	500 AM
Cremains, Niche Inurnment, Weekday	500
Cremains, Niche Inurnment, Saturday	550 AM
Infant, in ground	
Child, in ground	
Disinterment	
Disinterment/Reinterment	1,200
Transfer of Ownership	
Document/Admin Fee	
Memorials	
Individual	1,066-1282
Companion	1,684-2,115
Installation Fees	
Additional Fees	
Outside Installer Fees	75-125